

# THE WELSH DRAGON WREXHAM, NORTH WALES

## PROJECT DESCRIPTION

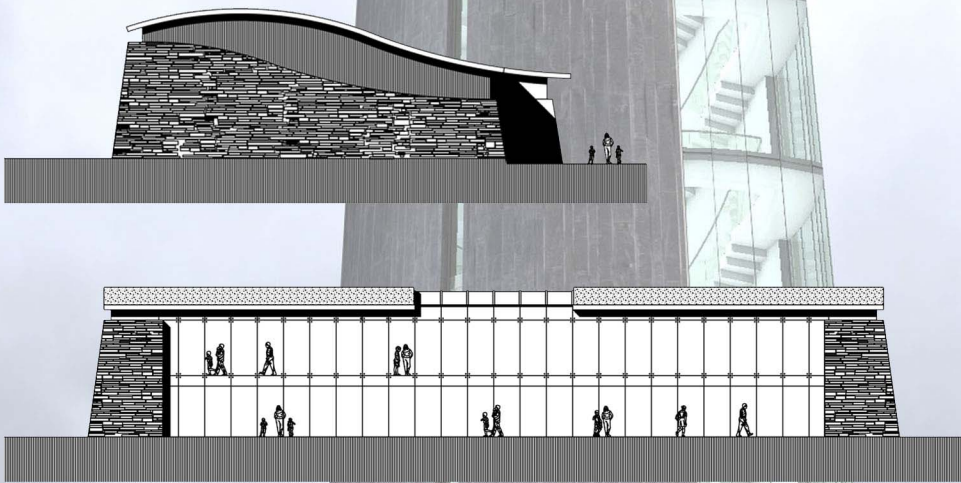
TACP have been appointed to design and develop the Welsh Dragon Project on the A5 approach road to Wrexham. The Project includes the design of a 40 metre high Viewing Tower on top of which sits a Dragon Sculpture by the Artist and Sculpture Steve Winterburn.

Set in a newly planted Oak Grove the Tower will be supported by a Visitor Centre that will include a cultural area and art gallery together with a merchandising facility and high quality cafe and restaurant.

Externally the site is to be landscaped to provide walks through parkland and sculpture parks.

The external spaces include 2 amphitheatres and sculptures referencing the Mabinogion stones.

The project has excellent sustainable intentions including solar panels,



Job no: 5927  
Project Sheet no: 013



## KEY DETAILS

**CLIENT:** The Frank Wingett Cancer Appeal

**Location:** Wrexham, North Wales

**Sector:** Leisure

**Construction Value:** £6 - £8 million (estimated)

Pembroke House, Ellice Way  
Wrexham Technology Park  
Wrexham LL13 7YT  
01978 291161  
admin@tacparchitects.co.uk

[www.tacparchitects.co.uk](http://www.tacparchitects.co.uk)