

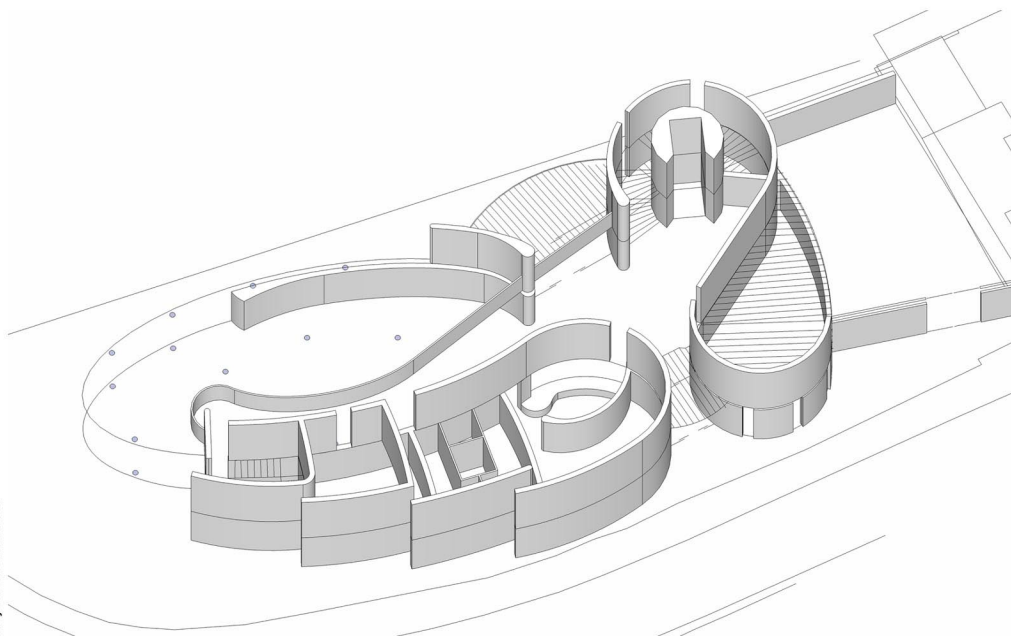
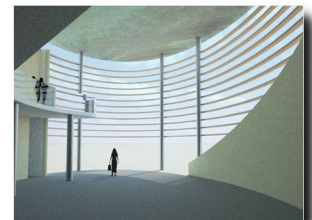
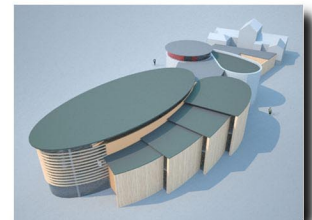
SLATE QUAY & CAERNARFON GATEWAY CENTRE CAERNARFON

PROJECT DESCRIPTION

TACP Architects have been involved with two associated projects in Caernarfon. Both projects are located along the river frontage known as Slate Quay, in the environs of Caernarfon Castle.

The redevelopment of the Quay site, which is approximately one kilometre long, involves enhancement of the river edge for public use, redevelopment of existing buildings (some listed) and new-build developments, to provide a sustainable mixed use.

Caernarfon Gateway Centre is a separate project which is proposed to occupy a strategic site adjacent to Slate Quay. This project incorporates a visitor information centre, exhibition space and supporting facilities. The project has links within the Welsh Heritage Railway, and will act as a tourist hub for North Wales.



Job no: N/A
Project Sheet no: 039



KEY DETAILS

CLIENT: Gwynedd County Council
Location: Caernarfon, North Wales
Sector: Commercial
Construction Value: N/A

Pembroke House, Ellice Way
Wrexham Technology Park
Wrexham LL13 7YT
01978 291161
admin@tacparchitects.co.uk
www.tacparchitects.co.uk